

RT1150 BUYER'S GUIDE

RT1150

Factory Assembled



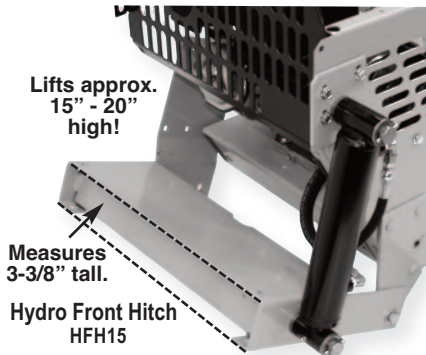
SPECIFICATIONS

Type	Assembled, tested	Battery	295 CCA
As Shipped	<u>Painted</u> , on pallet	Battery Box	Yes, Includes Cup Holder
Engine Brand	Honda, Gas	Attachment Type	<u>Hydraulic</u>
Engine Model	GXV390	Hydraulic Tank	4 Gallons
Engine Torque	17.85 ft-lbs	Oil Sight Window	Yes
Starting Type	Electric, Dash Mounted	Hydraulic Filter	Yes, In tank Screen
Tracks	Rubber w/ Mold. Grouser	Attachment Pump	3.3 GPM
Drive Type	Hydrostatic Transaxles	Attachment Valve	3 Bank Mono, (S,S,S)
Brakes	Dual, integrated	Float Sections	Optional, FVS20 Upgrade
Drawbar Pull	1,500 lbs.	Headlight	Optional, CU50 Upgrade
Width	41" Wide	Hour/Tach Meter	Optional, CU50 Upgrade
Length x Height	51" x 41"	Arm Rests	Optional, CU50 Upgrade
Base Weight	700 lbs.	Center Idlers	Optional, CI40 Upgrade
Speed Range	0-3.1 MPH, Variable	Roll-Over Struct.	Optional, ROPS20

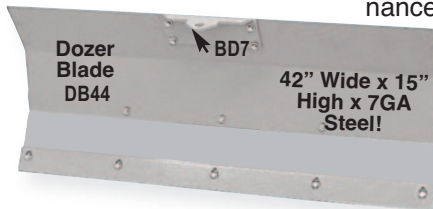
HFH15 Hydro Front Hitch Attachments

HYDRO FRONT HITCH KIT - Heavy-duty front mounted "hitch" for easy hydraulic lifting. With "finger-tip" control you can easily push hundreds of lbs. of material.

(Assembled)



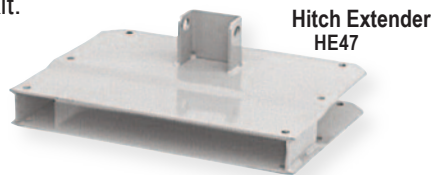
DOZER BLADE KIT - 3 position adjustable blade with replaceable cutting edge. Holes on cutting edge, allow a "slight angle" for driveway maintenance.



BLADE DRAWBAR KIT - Mounts to "top lip" of DB44 Dozer Blade. 9-1/4" wide drawbar with 45° bend. Has 3/4" hole for tow hook or chain clevis. Requires drilling four 5/16" holes in Blade.



HITCH EXTENDER KIT - Moves attachment "mounting holes" of Hydro Front Hitch, 6" forward. Required for use with Backhoe and Front Weight Kit.



FRONT WEIGHT KIT - 4" diameter solid steel weight bar, welded to plates and mounted to the front of machine. Necessary for counter-balance of Backhoe when HFH15 Hydro Front Hitch is purchased. *(Assembled, additional slip on weights available for even more weight).*

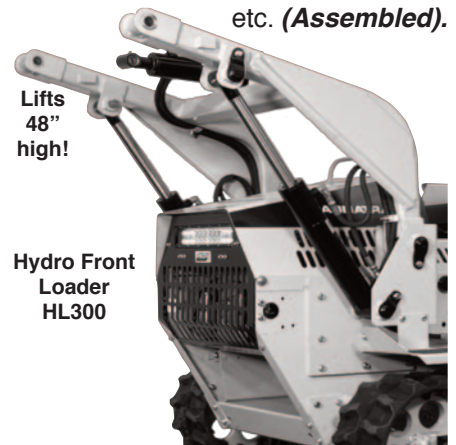


FRONT PLATE KIT - 1/4" thick weight plates mounted under the engine area. Necessary for counter-balance of D1060UG Backhoe when HL300 Front Loader is purchased. *(Assembled).*



HL300 Hydro Front Loader Attachments

HYDRO FRONT LOADER KIT - Heavy-duty front mounted "loader" for easy hydraulic lifting to 48" high. With "finger-tip" control you can easily lift 300 lbs. of rock, soil, manure, sand, etc. *(Assembled).*

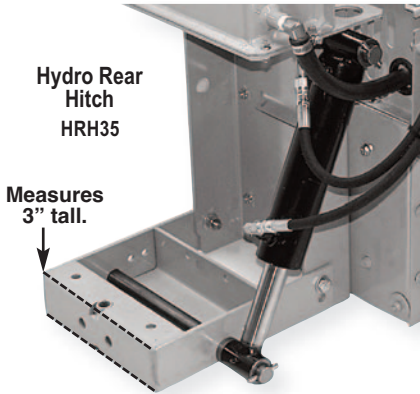


MATERIAL BUCKET KIT - loader-mounted, heavy-duty, 42-1/2" wide x 12-3/4" high x 13-1/2" deep bucket with hardened cutting edge. 300 lb. rated load. Rear "counterweight" required. *(See D1060UG or TW6).*



HRH35 Hydro Rear Hitch Attachments

HYDRO REAR HITCH KIT - Hydraulic "sleeve" Rear Hitch allows operator to effortlessly hook-up and move logs, rear-mounted carriers, tillers, compact trailers, etc. **(Assembled).**

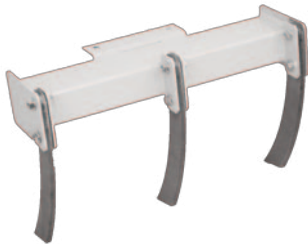


Hydro Rear Hitch
HRH35

Measures
3" tall.

THREE SHANK RIPPER KIT - Three 16" tall x 1/2" wide x 2" deep "hardened steel" ripping teeth mounted to heavy-duty frame. Great for loosening hardpacked driveways and landscaping.

Three
Shank
Ripper
TR23



HITCH ADAPTER KIT - Class III trailer hitch mounts to Rear Hitch with two bolts. Tube ID measures 2", and allows use of dozens of rear attachments, such as: log carriers, garden carts, etc. (Does NOT include ball hitch). **(Assembled.)**

Hitch Adapter
HA14



LOG CRANE - Great for pulling logs on a budget. Has holes to add a 3rd party winch. Has self contained draw-bar with 3/4" hole for ball hitch.

Log Crane
LW228

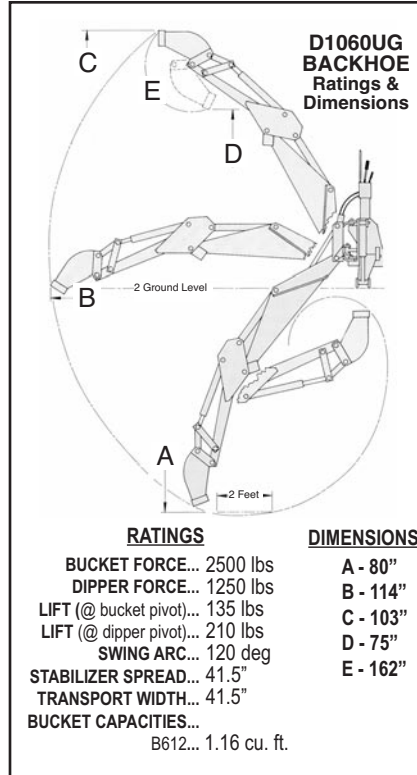


LOG CRANE ADAPTER - Required for use of LW228 Log Crane when a HRH35 Rear Hitch is mounted. Has 3/4" hole for ball hitch.

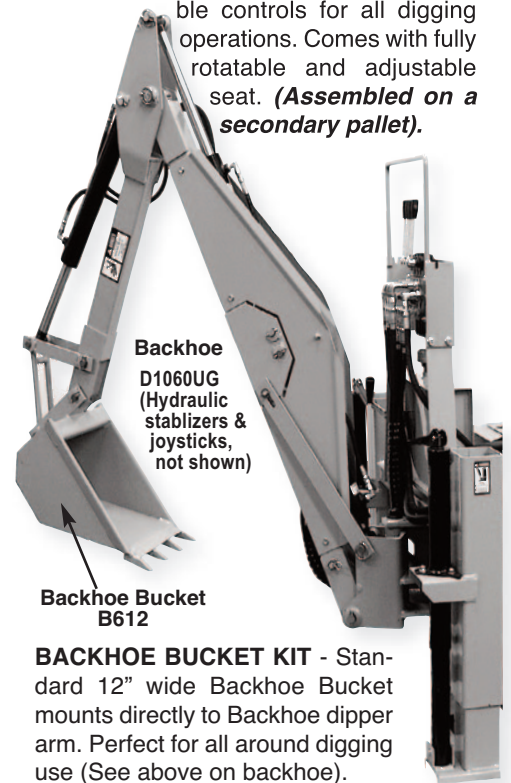
Log Crane
Adapter
LCA9



D1060UG Backhoe Attachments, Roll-Over Protective Structure & Counterweight



BACKHOE KIT - 6 1/2" ft. digging depth backhoe, mounts easily to a set of AM39 Angle Mounts Brackets (bottom of page), with just a few bolts. D1060UG utilizes (2) hydraulic stabilizers and (2) joystick wobble controls for all digging operations. Comes with fully rotatable and adjustable seat. **(Assembled on a secondary pallet).**



Backhoe
D1060UG
(Hydraulic
stabilizers &
joysticks,
not shown)

Backhoe Bucket
B612

BACKHOE BUCKET KIT - Standard 12" wide Backhoe Bucket mounts directly to Backhoe dipper arm. Perfect for all around digging use (See above on backhoe).

ROLL-OVER PROTECTIVE STRUCTURE KIT - The MAGNATRAC'S low center of gravity and ground gripping traction are no substitute for this safety structure. A must if intending to use the MAGNATRAC in a business.

Includes:
roll-over
structure,
seat belt and
mounting
hardware.
**(Assembled.
Requires
AM39 Angle
Mounts).**



At 80-5/8" tall,
it fits easily
under 7 ft.
garage doors!

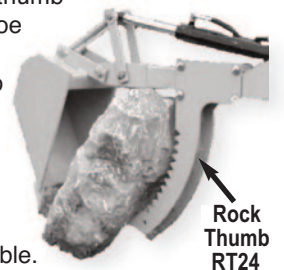
Roll-over
Protective
Structure
ROPS20

TRACTOR WEIGHT KIT - Weights mount easily to the Angle Mount Kit, and supply rear counterweight when HL300 Loader is purchased without a backhoe.

Tractor Weight
TW6



ROCK / DEBRIS THUMB KIT - Rock "thumb" mounts to Backhoe "dipper arm" of Backhoe with two bolts. Great for grabbing brush, logs and rocks. Distance of Bucket "teeth" to Thumb is adjustable.



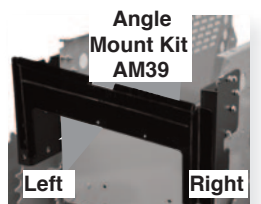
Rock
Thumb
RT24

BACKHOE FROST / CHISEL TOOTH RIPPER KIT - Heavy-Duty single tooth ripper mounts in place of Backhoe Bucket. Comes standard with (1) 2" wide & (1) 1/2" wide tooth.



Backhoe
Frost /
Chisel
Ripper
BR50

ANGLE MOUNT KIT - Rear mounted bracket system is the connection point for a ROPS, Backhoe or Tractor Weight Kit. **(Assembled).**



Angle
Mount Kit
AM39

Left

Right