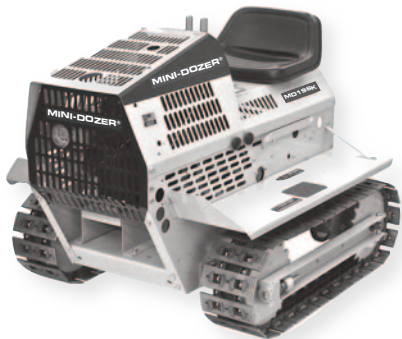


# MD196K BUYER'S GUIDE

## MD196K

**Build it Yourself... D-I-Y Kit**



## SPECIFICATIONS

Type	D-I-Y Kit
As Shipped	Unpainted
Engine Brand	Briggs & Stratton
Engine Size	[250cc]
Engine Torque	11.5 ft/lbs
Starting Type	Recoil at Seat
Bearing Type	Sealed
Transmission	Kevlar V-Belt
Brakes	Single Caliper
Drawbar Pull	1,000 lbs.
Width	41" wide
Length x Height	51" x 38"
Base Weight	575 lbs.
Max. Speed	3.15 MPH
Attachment Type	Manual

## Track Options

### RUBBER Upgrade or...

**RUBBER TRACK UPGRADE KIT** - Contractor grade rubber tracks, will give you the Power & Traction you need, with the "Velvet Touch" of rubber! Tracks consist of a continuous steel core band and forged steel metal bars inside the rubber. Measures: 7" wide x 72mm pitch x 35 links.

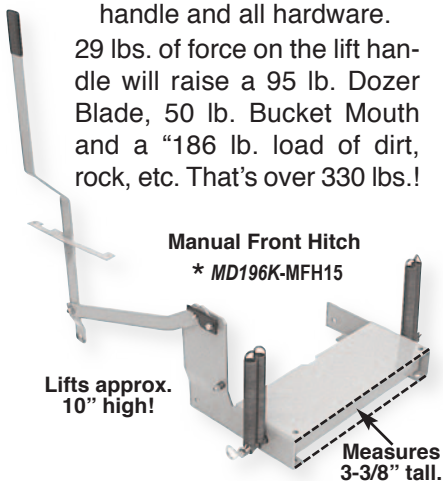


Rubber Track Upgrade RTU19

## MD196K Front Attachments

**MANUAL FRONT HITCH KIT** - Standard-duty front lifting system. Channel is 3-3/8" tall. Comes complete with dual sets of "lift assist" springs, lift handle and all hardware.

29 lbs. of force on the lift handle will raise a 95 lb. Dozer Blade, 50 lb. Bucket Mouth and a "186 lb. load of dirt, rock, etc. That's over 330 lbs.!

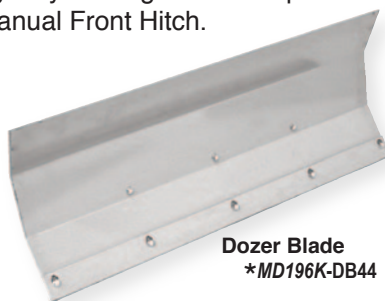


Manual Front Hitch  
\* MD196K-MFH15

Lifts approx. 10" high!

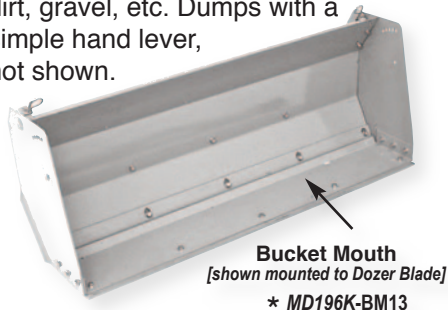
Measures 3-3/8" tall.

**DOZER BLADE KIT** - 42" wide x 15" high x 7GA solid steel, 3 position adjustable blade with replaceable cutting edge. Slotted bolt holes on cutting edge, allow a "slight angle" for driveway maintenance. Angles left and right by moving 1 bolt. Requires Manual Front Hitch.



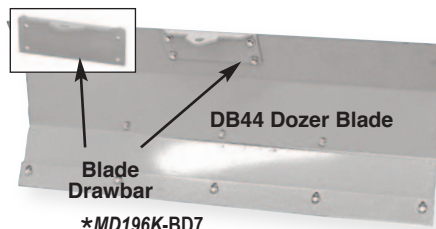
Dozer Blade  
\*MD196K-DB44

**BUCKET MOUTH KIT** - Attaches to MD196K-DB44 Dozer Blade with 2 pins! Forms a "mouth" with the Blade and becomes a "clam shell" style bucket. Handles a couple 100 lbs. of dirt, gravel, etc. Dumps with a simple hand lever, not shown.



Bucket Mouth  
[shown mounted to Dozer Blade]  
\* MD196K-BM13

**BLADE DRAWBAR KIT** - Mounts to "top lip" of DB44 Dozer Blade. 9-1/4" wide drawbar with 45° bend. Use for medium-duty pulling. Has 3/4" hole for tow hook or chain clevis. Requires drilling four 5/16" holes in Blade.

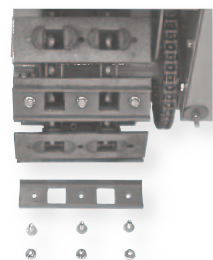


Blade Drawbar  
DB44 Dozer Blade  
\*MD196K-BD7

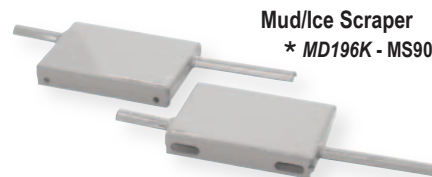
### STEEL with GROUSER

**GROUSER TRACK SHOE KIT** - Heavy-duty "U" shaped, 8" wide x 2" deep x 1/2" tall, all-steel grouser shoes, provide the ultimate stiffness, traction, and strength to standard steel track. Comes complete with all fasteners. **(Works with Standard Steel tracks only).**

\* Grouser Shoe TSO58



**MUD / ICE SCRAPER KIT** - Pair of dual "scraper arms" mount between front and rear track sprockets. When tractor is in motion, they continually remove rock chips, mud and snow build-up from between track sprockets. **(Steel tracks only).**



Mud/Ice Scraper  
\* MD196K - MS90

# MD196K Rear Attachments

**MANUAL REAR HITCH KIT** - Standard-duty “sleeve hitch” rear lifting system. Has 2 “lift-assist” springs to aide in lifting attachments. 2 lbs. of lift handle force will raise 24lb. DR30



Measures 3" tall.

**DOUBLE RIPPER KIT** - Two 16" tall x 2" wide x 1/2" thick “hardened steel” ripping teeth mounted to heavy-duty steel channel. Great for loosening



hard packed driveways and landscaping. Design allows to flip tooth for greater wear.

**HITCH ADAPTER KIT** - Class III trailer hitch mounts to Manual Rear Hitch with two bolts. Tube ID measures 2", and allows use of dozens of rear attachments, such as: log carriers, garden carts, etc. (Does NOT include ball hitch).



**LOG CRANE KIT** - Heavy-duty rear mounted crane. Great for pulling logs! Has self-contained drawbar with 3/4" hole for ball hitch.

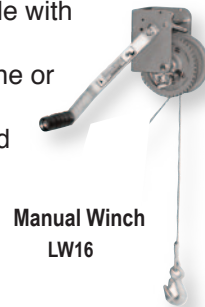


Mounitng holes allow for many 3rd party winch designs.

**LOG CRANE ADAPTER / DRAWBAR KIT** - Required for use of LW228 Log Crane when a Manual Rear Hitch is mounted. Has 3/4" hole for ball hitch. (Can also be used alone when you need a drawbar and have a Rear Hitch mounted).



**MANUAL WINCH KIT** - Manual utility winch, 800 lb. pull capacity, 5/32" dia. x 25 ft. long cable with hook. (Requires LW228 Log Crane or mounting location provided by customer).



\* Unpainted attachment.